

Thinking Money for Kids

Traveling exhibit

Packing list
Setup guide



1 Packing List

2 Setup Directions

case	amounts	description	Weight in Lbs.
1	6	Table tops	280
2	3	graphics with stands	360
	20	table legs	
	1	touch screen television	
	3	iPads with stands	
	1	box game pieces and tools (contents below)	
		1 time machine acrylic	
		2 bread, bannanas, wood, eggs for "Let's Deal"	
		2 each of 3 "Earning It" people	
		2 money trail people	
		5 dollar bills	
		12 each: quarters, dimes and nickles	
		6 pennies	
		4 labeled ziplock bags of hardware	
		ziplock bags of tools (2 hand drivers and 2 tips for screwguns)	
		1 bag "extra" hardware	
3	1	base for touch screen	80
	1	Dell computer (remains with base)	
	1	box computer peripherals (probably never needed)	
4	4	curved stretch graphics that velcro to tables	270
	1	stand alone title graphic	
	1	blue screen not used in exhibit, available for spare parts	
total weight			990

HELLO!

The Thinking Money for Kids Exhibit is made up of three different styles of components. Tables, pop-up display graphics, and a touchscreen computer on stand. The Graphics setup and dismantle the exact same way, while the table units share most of the same components

Now is the time to read through the directions, clean the installation area, and organize the cases. If you and your team take your time and treat the exhibit with care, the setup should be a breeze.

Lastly, please repack the display as if you were the next recipient. The packing lists and instructions are only helpful if the exhibit is repacked correctly.



[1] SETUP (for pop-up displays)

Open case (image inside case is identified by picture glued to case)

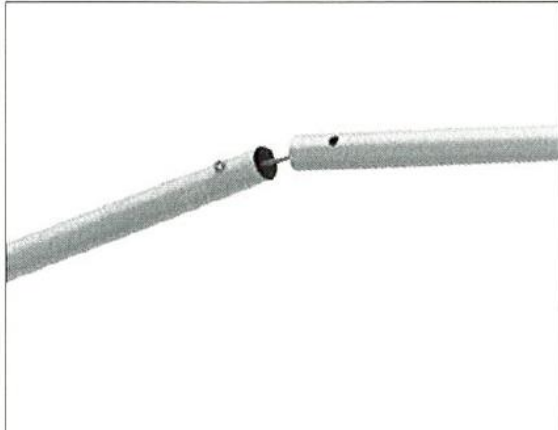


[2]

Open bag to access frame parts

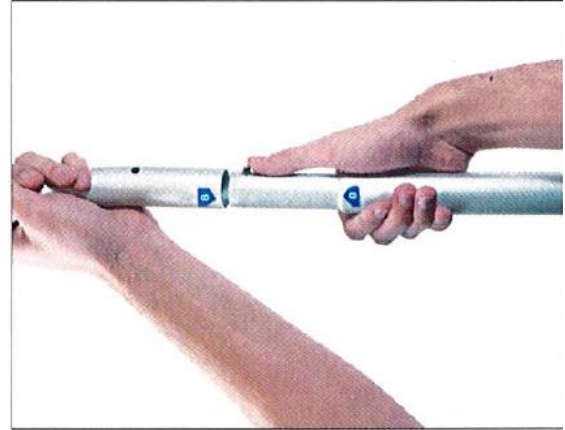
SETUP INSTRUCTIONS

Thinking Money / Traveling Exhibit



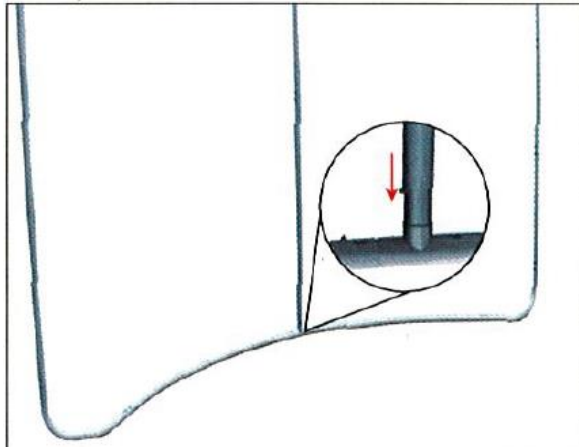
[3]

Assemble bungeed poles



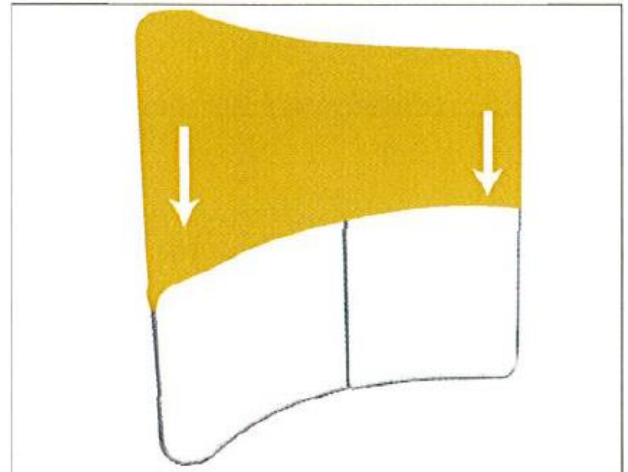
[4]

Attach poles to correctly numbered corners



[5]

Attach center pole

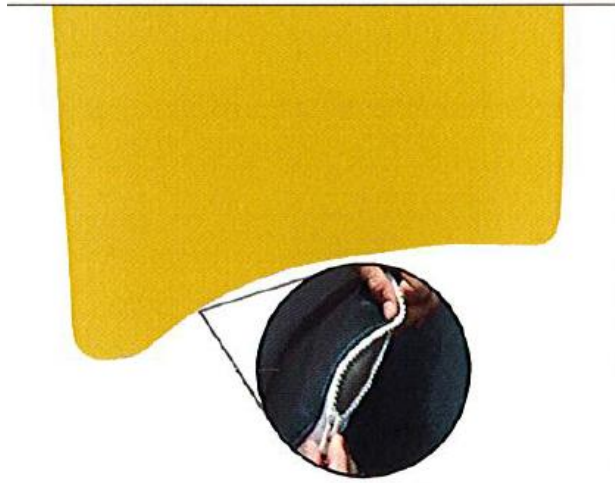


[6]

Slide pillowcase graphic down over frame, be sure to have Velcro tabs on inside of main curve. Both sides are identical otherwise. This is most easily accomplished with 2 people.

SETUP INSTRUCTIONS

Thinking Money / Traveling Exhibit



[7]

Zip zipper and stand up



[8]

Gently twist both ends of graphic until it is vertical

SETUP INSTRUCTIONS

Thinking Money / Traveling Exhibit



[1] Set up instructions (tables)

Open crates 1 and 2



[2]

Remove any tabletop from crate one and set it on its flat edge



[3]

Remove box of legs from case 2.



[4]

Screw legs into holes on the bottom of the table. If it has 4 legs, you can stand it up, if only two leave it to the side until its partner is set up and standing

SETUP INSTRUCTIONS

Thinking Money / Traveling Exhibit



[5]

If the table is a single unit table (Lets Deal; Earning It)
Put table in desired position on floor, and level via
turning the adjustments on the bottom of legs



[6]

If the unit is a double table (Money Trail; Way to Pay) set up 4
legged table approximately where it will go, and set 2 legged
partner on across tabs sticking out



[7]

Once tables are pushed together, reach underneath and latch
both ½ turn latches to secure tables together as a unit. Once
put in position these can be leveled like their single table
bretheren.

SETUP INSTRUCTIONS

Thinking Money / Traveling Exhibit



[1] setup individual tables

(Let's Deal)

Once table is set up in proper place remove the panel from case 2 with the three iPads in holders, and unscrew the tablet labeled Let's Deal (labeled on the board, and the bottom of the iPad stand). These, and all screws use the screwdriver and screw tips included in the crate 2 small parts box. (Although a screwgun is shown in the photo, this can also be done with the included hand screwdriver.)



[2]

Unscrew bottom of table to gain access to the electronics; there will be two screws under front of table.



[3]

Feed cord through hole in back of table and attach iPad stand to table using bolts provided. Be careful not to cross thread bolts, they should go in easily

SETUP INSTRUCTIONS

Thinking Money / Traveling Exhibit



[4]

Attach USB C cable from iPad to female adaptor under case. It is important that red lines are on same side or unit will not function



[5]

Thread Edison plug through hole in bottom of case and plug in USB hub. Then close up bottom of case



[6]

Attach Velcro tabs of large curved graphics to sides of table.



(7)

Game pieces for Let's Deal (1 of each are required to play).

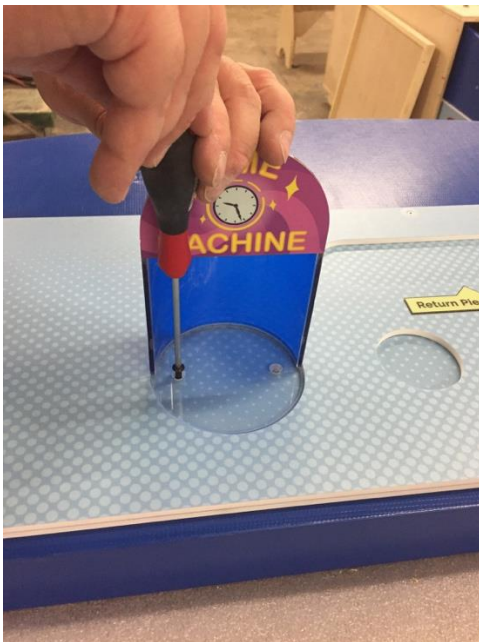
SETUP INSTRUCTIONS

Thinking Money / Traveling Exhibit



[1] Setup individual tables (Earning It)

Repeat steps 1-5 of Let's Deal (picture of Earning It tabletop, iPad and holder)



[2]

Attach time machine down to table with screws provided

SETUP INSTRUCTIONS

Thinking Money / Traveling Exhibit



[3]

Attach velcro tabs on Earning It curved graphic to sides of table



(4)

Game pieces for Earning It (1 of each required to play).



[1] Setup individual tables (Money Trail)

Once table is set up in proper place remove the panel from case 2 with the three iPads in holders, and unscrew the tablet labeled Money Trail (labeled on the board, and the bottom of the iPad stand). These, and all screws use the screwdriver and screw tips included in the crate 2 small parts box.

SETUP INSTRUCTIONS

Thinking Money / Traveling Exhibit



[2]

Unscrew and unclip iPad holder from board. Unscrew bottom of table to gain access to the electronics (there will be two screws under front of table).



SETUP INSTRUCTIONS

Thinking Money / Traveling Exhibit



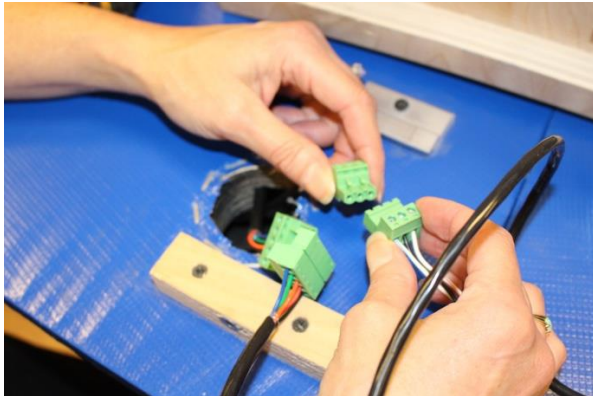
[3]

Unscrew bottom of table to gain access to the electronics (there will be two screws under front of table).



[4]

Thread Edison plug through hole in bottom of case and plug in USB hub.



[5]

Push green connectors through holes in center of table and connect them (there is only one way they can connect, so don't worry about mixing them up)



[6]

Connect iPad to female USB connector (again make sure that lines align on side of plug or unit will not function)



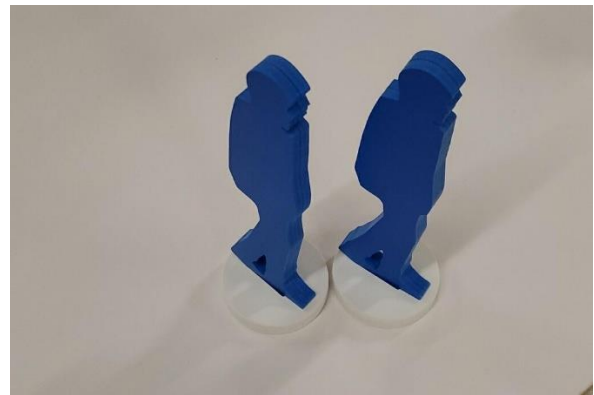
[7]

Push all connectors back below table top. Clip and screw plywood base to table across the seam with screws provided.



[8]

Thread Edison plug through hole in bottom of case and plug in USB hub. Then close up bottom of case



(9)

Game pieces for Money Trail (one of each required for game)

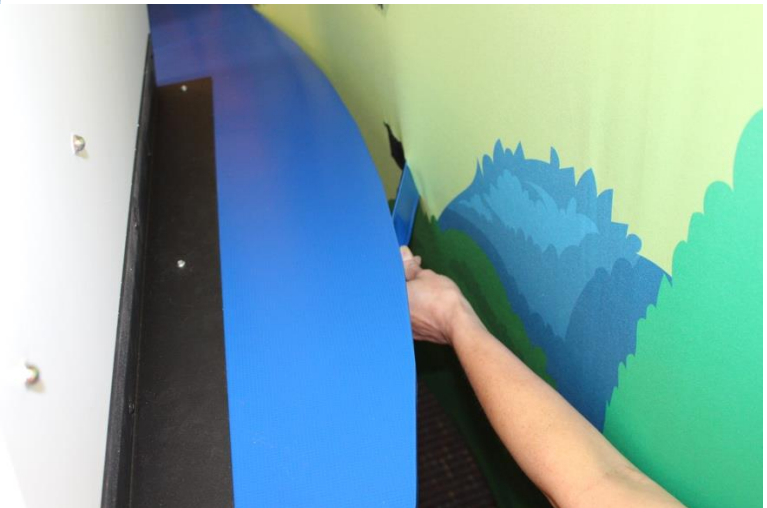
SETUP INSTRUCTIONS

Thinking Money / Traveling Exhibit



[9]

Remove graphic from crate 2 and screw down to tabletop with bolts provided



[10]

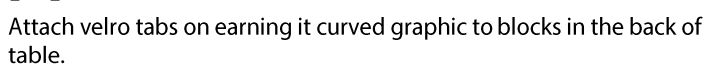
Attach velcro tabs on earning it curved graphic to blocks in the back of table.



[1] Setup individual tables (Making Change/Way to Pay)

Once table is set up remove case from bottom of crate two
and remove graphics

Thinking Money / Traveling Exhibit



SETUP INSTRUCTIONS

Thinking Money / Traveling Exhibit



(1) Individual setup

Touch screen interactive

Remove top from touchscreen base, remove velcroed box holding computer peripherals, and twist pivot locks holding base in place



(2)

Remove screen from box in crate 2. Hook over bars attached to base. Screw in retaining screw at bottom of piece attached to back of touchscreen

SETUP INSTRUCTIONS

Thinking Money / Traveling Exhibit



(3)

Attach cords (already attached to computer mounted to base) to touchscreen. There are three cords, and HDMI that attaches to top HDMI input on touchscreen. A stereo 1/8" jack, and a USB A cord that plug into the only available sockets for their kind (actually the stereo jack can plug into two places, but it is conveniently color coded)



(4) make sure cat approves

[GENERAL CLEANING]

Cleaning should take place after the unit has been setup. In most cases the graphic being cleaned can remain on the structure while cleaning, but in some cases graphic(s) and or strut(s) may have to be taken off of the frame.

[GRAPHIC DUST]

Dust is the most common form of dirt found on graphic panels. The static that attracts the dust is caused when the graphics slide in and out of the protective sleeves. A clean, dry, soft, cotton towel (old t-shirts are ideal) or a new, clean, synthetic, dusting wand will take care of most dust issues with ease.

[GRAPHIC SMUDGES]

Smudges generally occur when handling the panels during setup. Smudges can be as faint as a finger print or as heavy as a scuff. To remedy smudges lightly dampen a soft cotton rag (old t-shirts are ideal) with water or glass cleaner. Very lightly wipe the smudge until it is removed. Some glass cleaners may leave streaks on the panel. If this occurs, use a dry portion of the cloth and lightly buff out the streaks. If you feel you may buckle or kink the panel while cleaning it, you should remove the panel and clean it on a large, clean, dry surface. CAUTION: Using any other chemicals or solvents other than the ones mentioned above or rubbing/buffing the graphics with too much pressure may result in the lamination being damaged.

(CLEANING iPADS)

To clean the iPad screen, turn off the iPad (press and hold the power button, and then slide the on screen slider). Use a soft, slightly damp, lint-free cloth. To avoid getting moisture in openings mist water on the cloth rather than directly on the screen. Don't use window cleaners, household cleaners, compressed air, aerosol sprays, solvents, ammonia, abrasives, or cleaners containing hydrogen peroxide to clean iPad. iPad has an oleophobic coating on the screen; simply wipe iPad's screen with a soft, lint-free cloth to remove oil left by your hands. The ability of this coating to repel oil will diminish over time with normal usage, and rubbing the screen with an abrasive material will further diminish its effect and might scratch your screen.



[OTHER CLEANING ISSUES]

For any other cleaning, maintenance or care issues, please contact the exhibit manufacturer.

Allan McNab

Mystic Scenic Studios

293 Lenox St, Norwood, MA 02062

Ph: 781 329 90006

Crate 1



Crate 2



Empty



Television



Case containing Making Change and Way to Pay graphics



iPads in holders

Crate 2 continued



Graphic for Money Trail



Box for legs



Box of game pieces and hardware

Crate 3



Base locked down with pivots

Crate4

